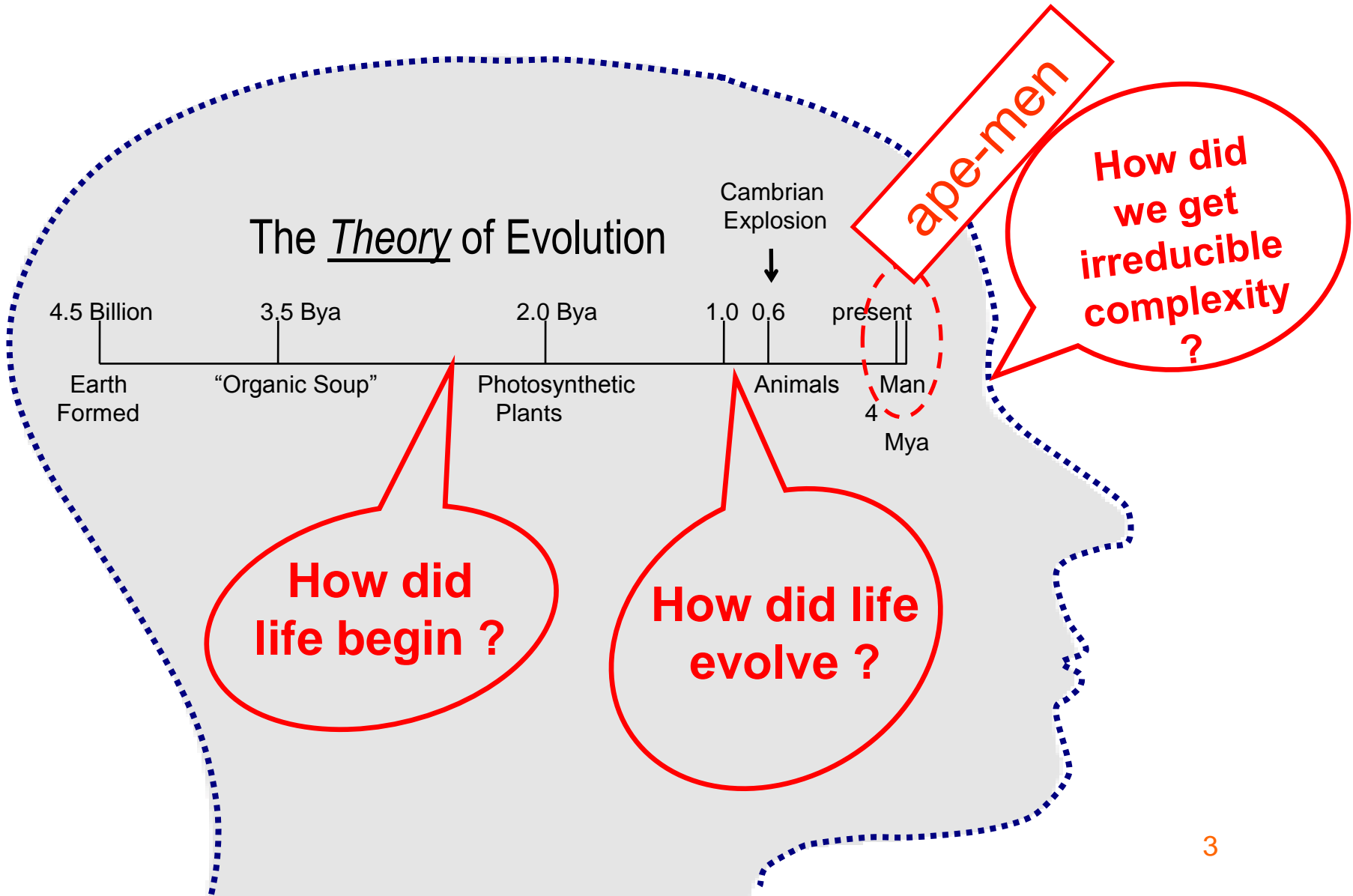


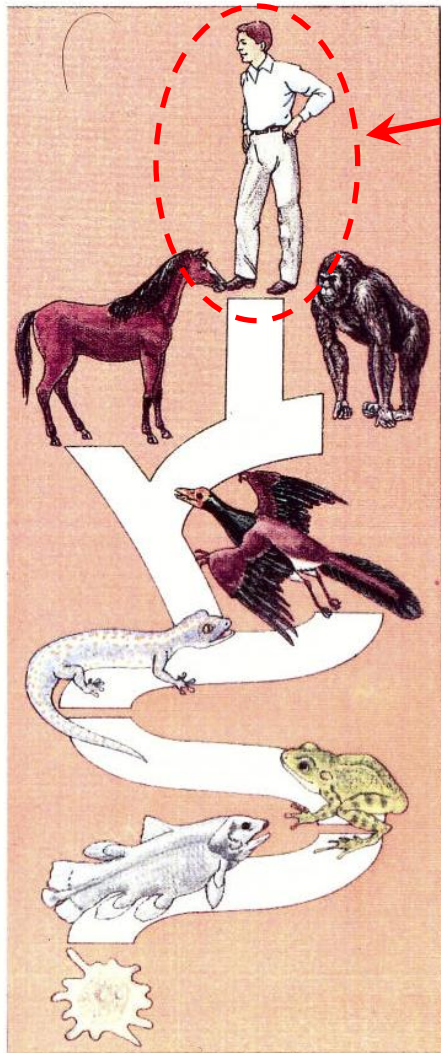
“Early Man”

Gerald Lenner, Ph.D.
November 17, 2010

Talk Outline

- Review
- The Short Story - A Tale of Two Buckets
- False Ancestors of Man
- Candidate Ancestors
 - Neanderthals
 - Australopithecines
 - Homo erectus
- No Ancestral Tree for Humans
- Biblical / Secular Anthropology

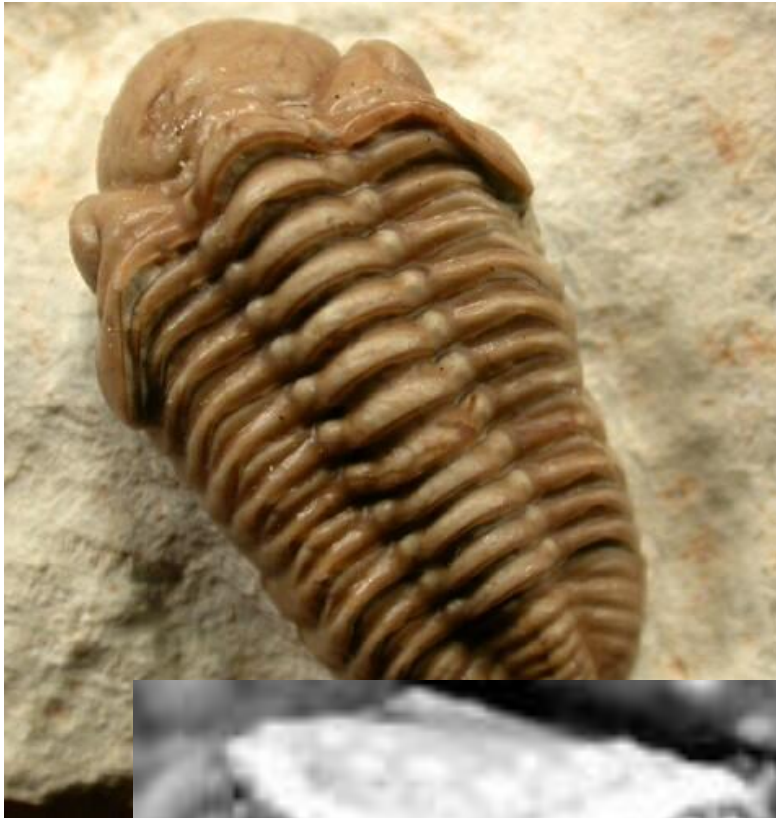




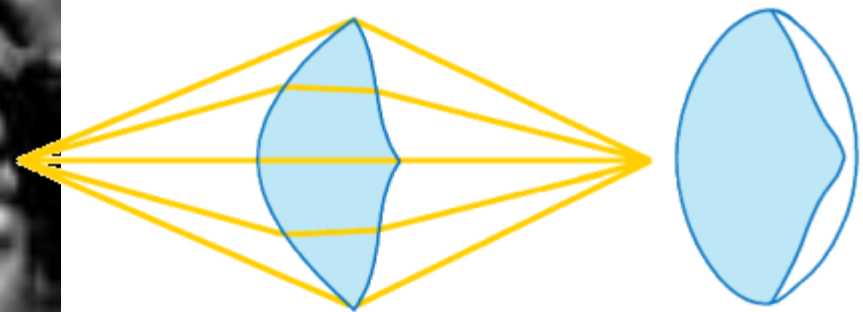
You are here

Theoretical Evolution of Man

Theoretical evolutionary flow chart



Trilobites

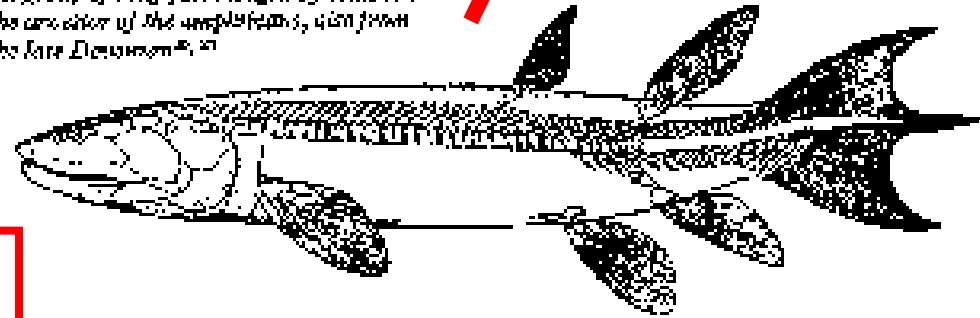


Amphibian



Ichthyostega, one of the earliest amphibians from the late Devonian. (from Jarvik)¹⁰

Eusthenopteron (from Gregory and Bevan)¹¹, a representative of the *Neopterygia*, the group of bony fish thought by some to be the ancestor of the amphibians, also from the late Devonian.¹²



Fish

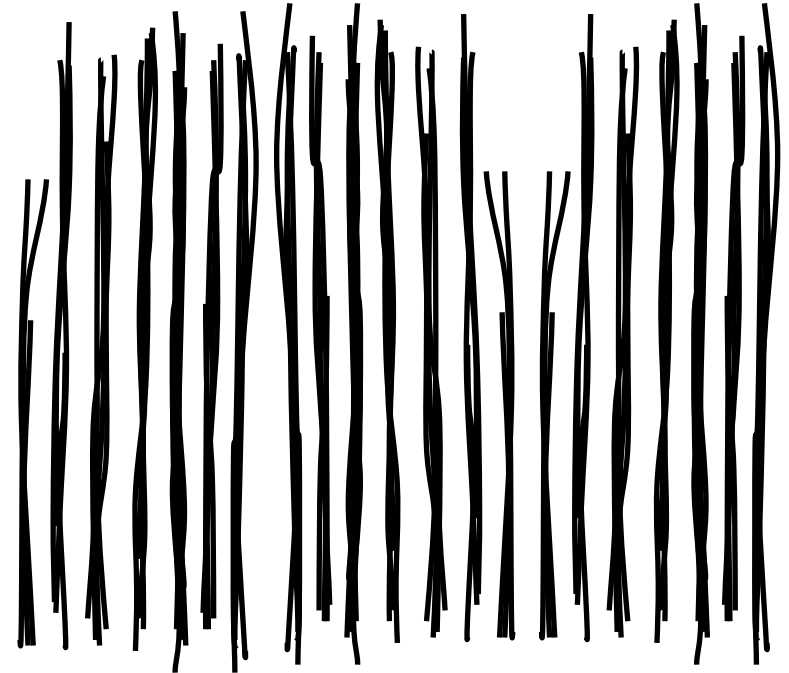
Figure 8.2a: The earliest known amphibian alongside a *Neopterygian* fish.

Evolution



↔
Morphology

Creation



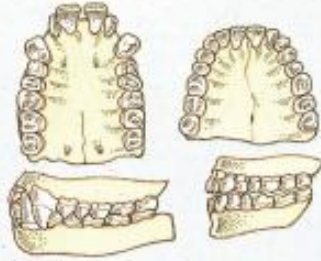
↑
Time

↔
Morphology

The Short Story

A Tale of Buckets – Apes and Men

Ape and human hands are similar, but the long and mobile thumb is one of man's most useful acquisitions.



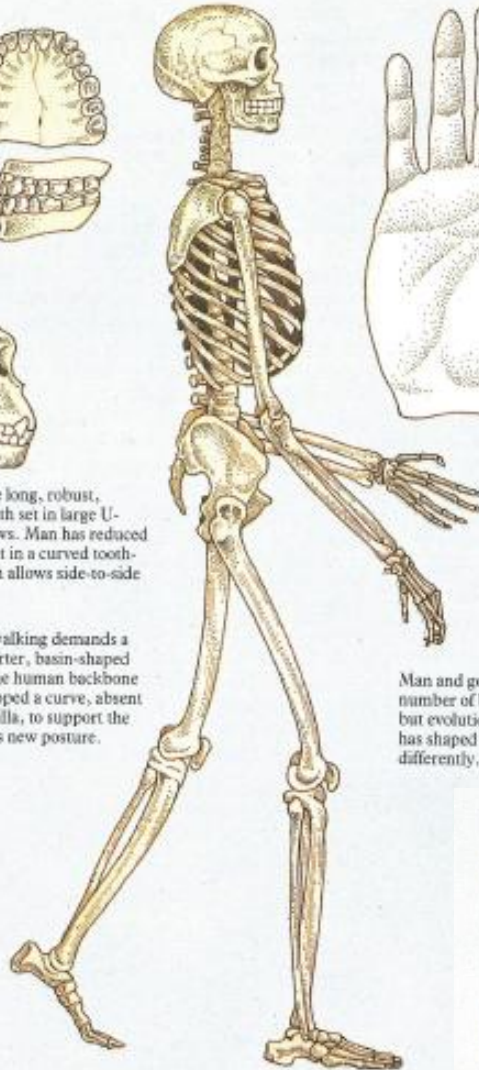
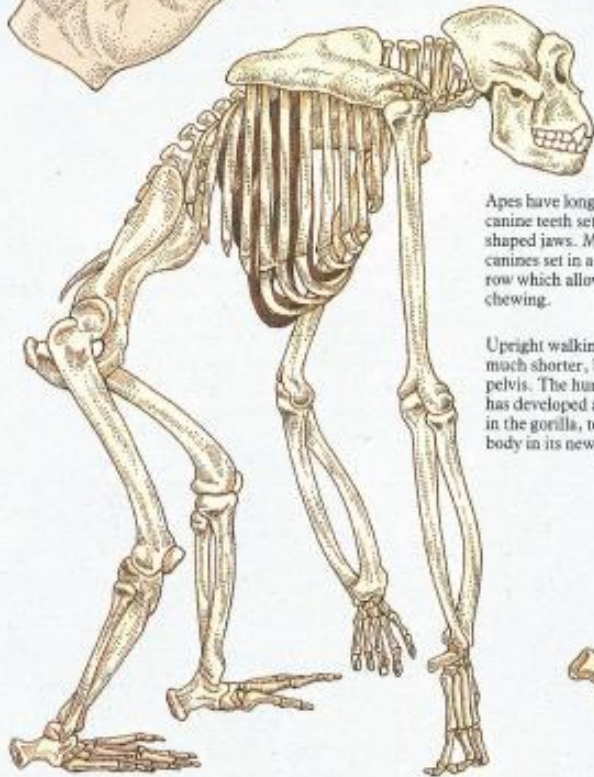
Apes have long, robust, canine teeth set in large U-shaped jaws. Man has reduced canines set in a curved tooth-row which allows side-to-side chewing.

Upright walking demands a much shorter, basin-shaped pelvis. The human backbone has developed a curve, absent in the gorilla, to support the body in its new posture.



Both apes and man have distinctive anatomy

Man and gorilla have the same number of bones and teeth, but evolutionary adaptation has shaped them very differently.



Among the apes, the gorilla has the foot most like that of man, but there are still differences: the gorilla has longer toes, a divergent great toe and lacks the arch which gives spring to the human stride.

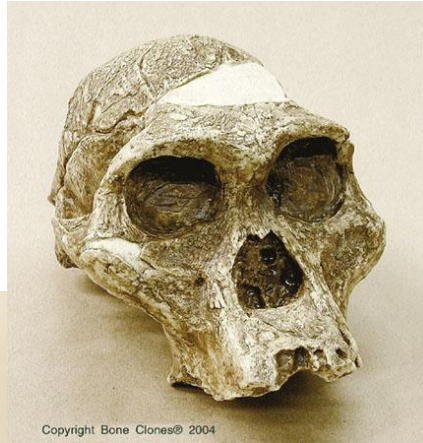


APES

Australopithecus africanus Skull Sts 5 "Mrs. Ples"



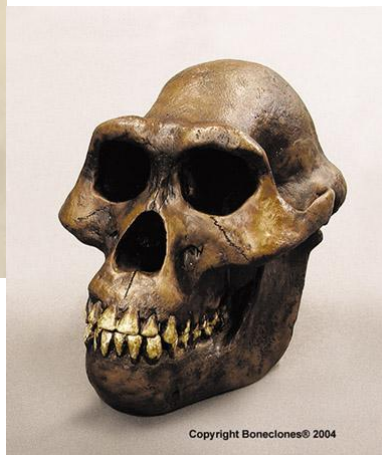
Australopithecus robustus Skull SK-48



Copyright Bone Clones® 2004



Australopithecus boisei Skull KNM-ER 406



Australopithecus afarensis

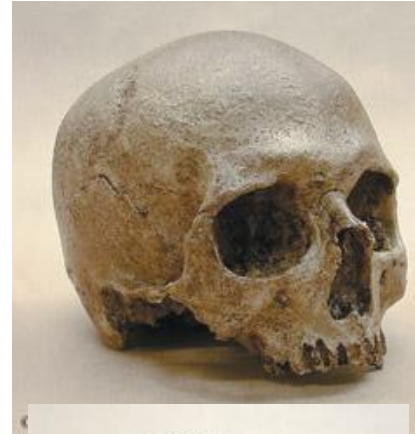
HUMANS

Homo habilis Skull KNM-ER 1813



© 2009 Bone Clones®

Cro-Magnon Skull



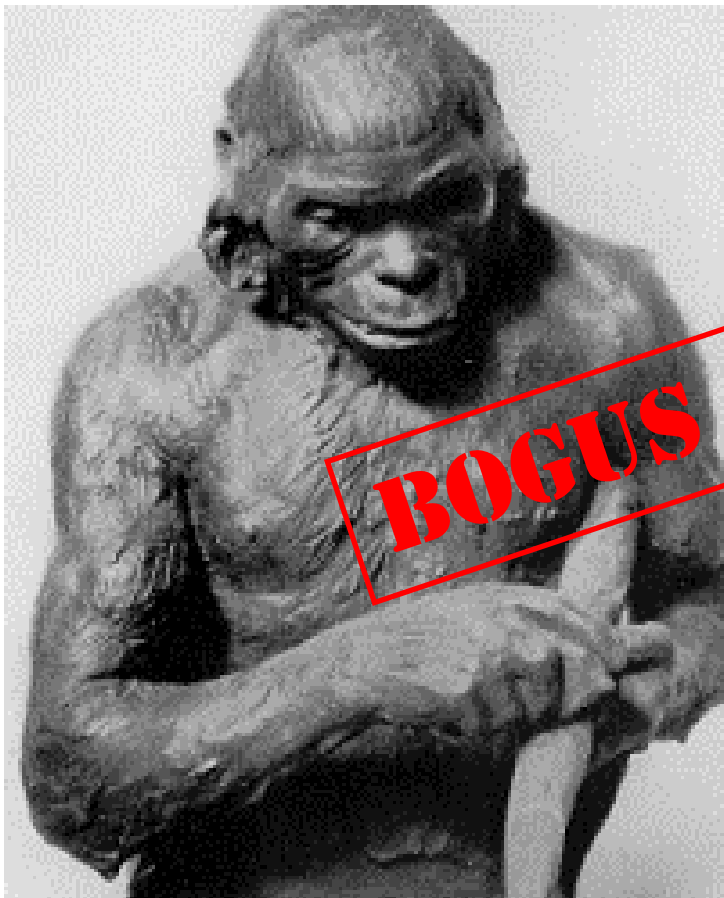
Homo neanderthalensis Skull La Ferrassie 1



Homo neanderthalensis Skull La Chapelle -aux-Saints

False Ancestors of Man

Discovered 1910-12 in Sussex England. Consisted of an orangutan jaw with filed teeth and a human skull cap. It was an intentional hoax and accepted until 1953.



BOGUS ANCESTOR



'Reconstruction' of the Piltdown skull by J.H. McGregor (1914)

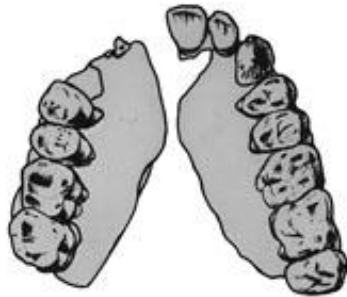
(*Hesperopithecus haroldcookii*)

Based on a single tooth found in 1922 by Harold Cook in western Nebraska. Later it turned out to be from an extinct pig !

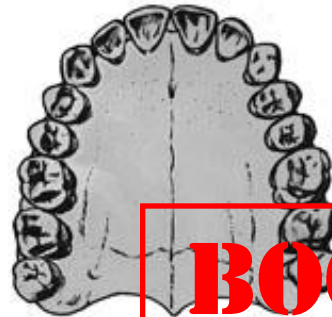


Discovered 1932 in India, Consisted of teeth and jaw fragments, Now accepted as an extinct orangutan

Ramapithecus
1932 - 1977

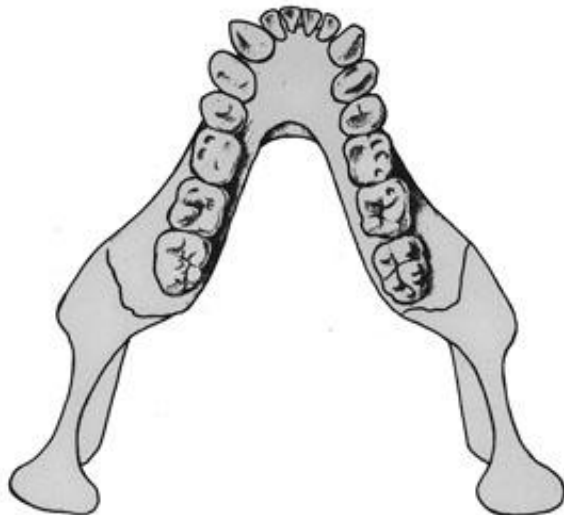


Man



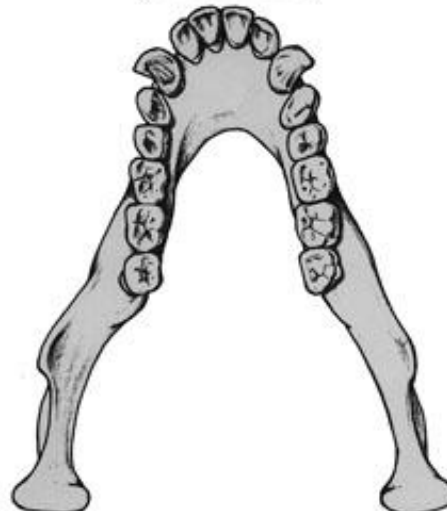
BOGUS ANCESTOR

Ramapithecus
1977 - Present



Ape

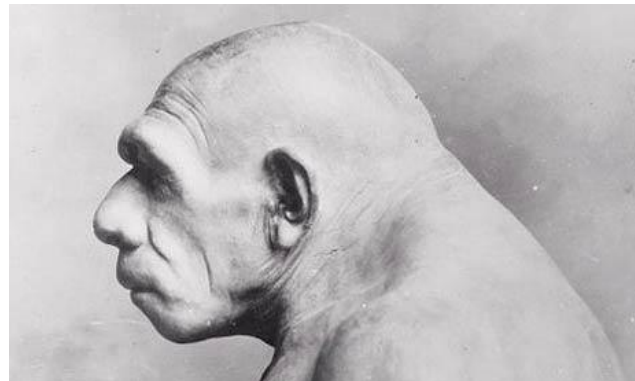
(Chimpanzee)



Candidate Ape Men:
Neanderthals
Australopithecines
Homo erectus

Neanderthals

First discovered in 1856.
Evidence of tool use, ritualistic
burial of their dead, and jewelry.
Now regarded as human.



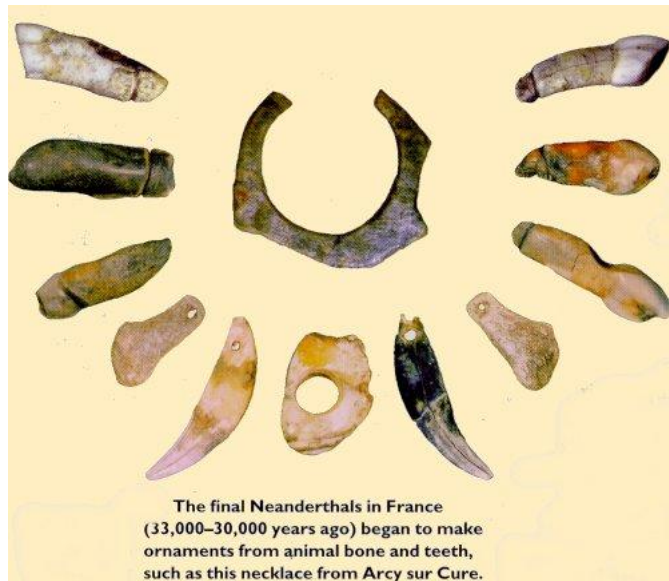
Originally published in L'illustration and Illustrated London News, 1909



Tools



Jewelry



Australopithecines

EXTINCT APES

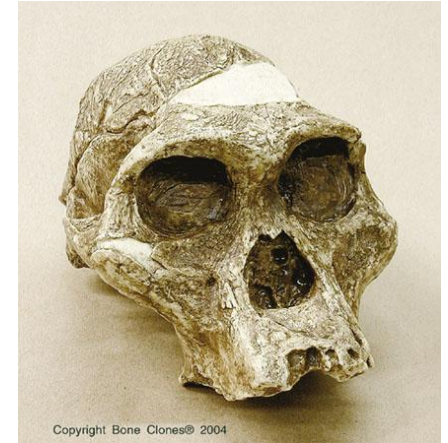


**Australopithecus
robustus Skull SK-48**

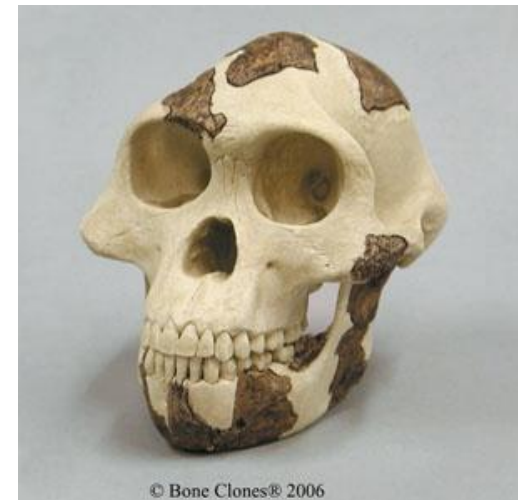


**Australopithecus
aethiopicus Skull
KNM-WT 17000**

**Australopithecus africanus
Skull Sts 5 "Mrs. Ples"**

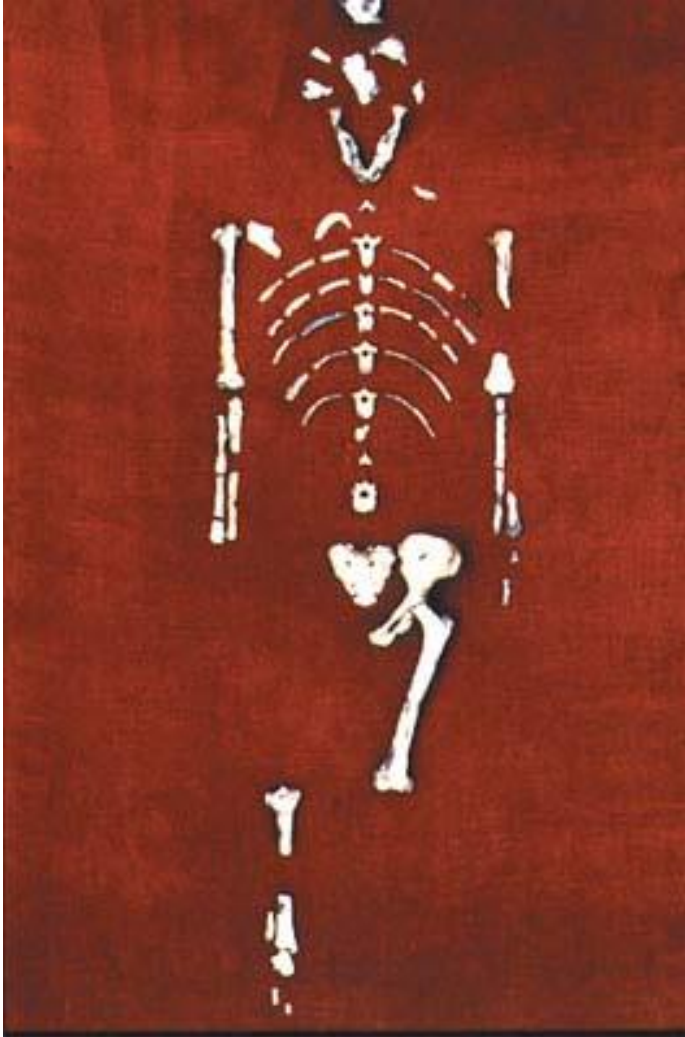


**Australopithecus boisei
Skull KNM-ER 406**



**Australopithecus afarensis
Skull "Lucy"**

Australopithecus afarensis - “Lucy” as in “Lucy in the Sky with Diamonds”

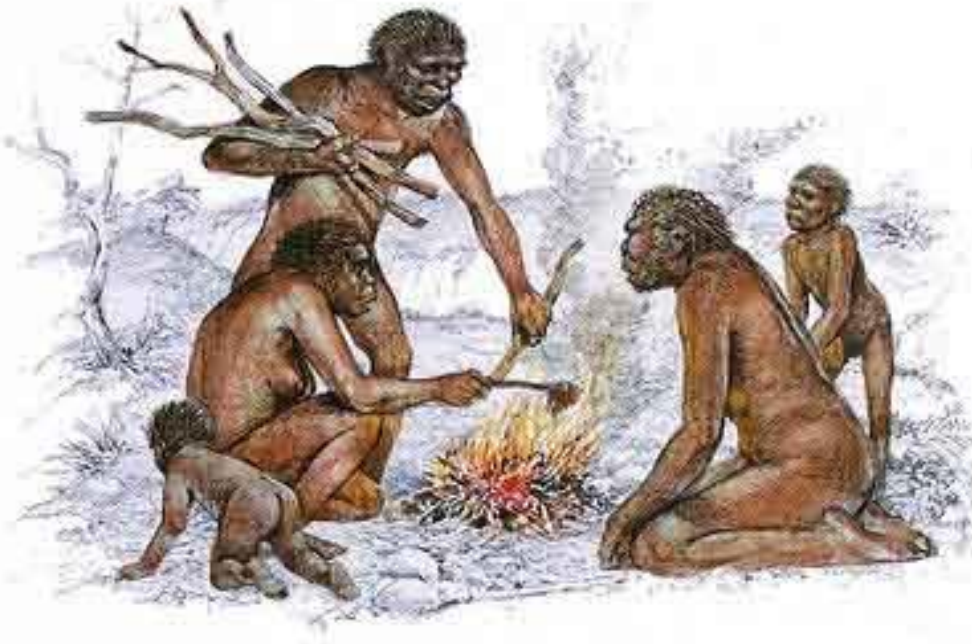




**Discovered in 1976
by Mary Leakey,
dated to be 3.5
million years old –
the time of the
australopithecines
but are fully human
in appearance !**

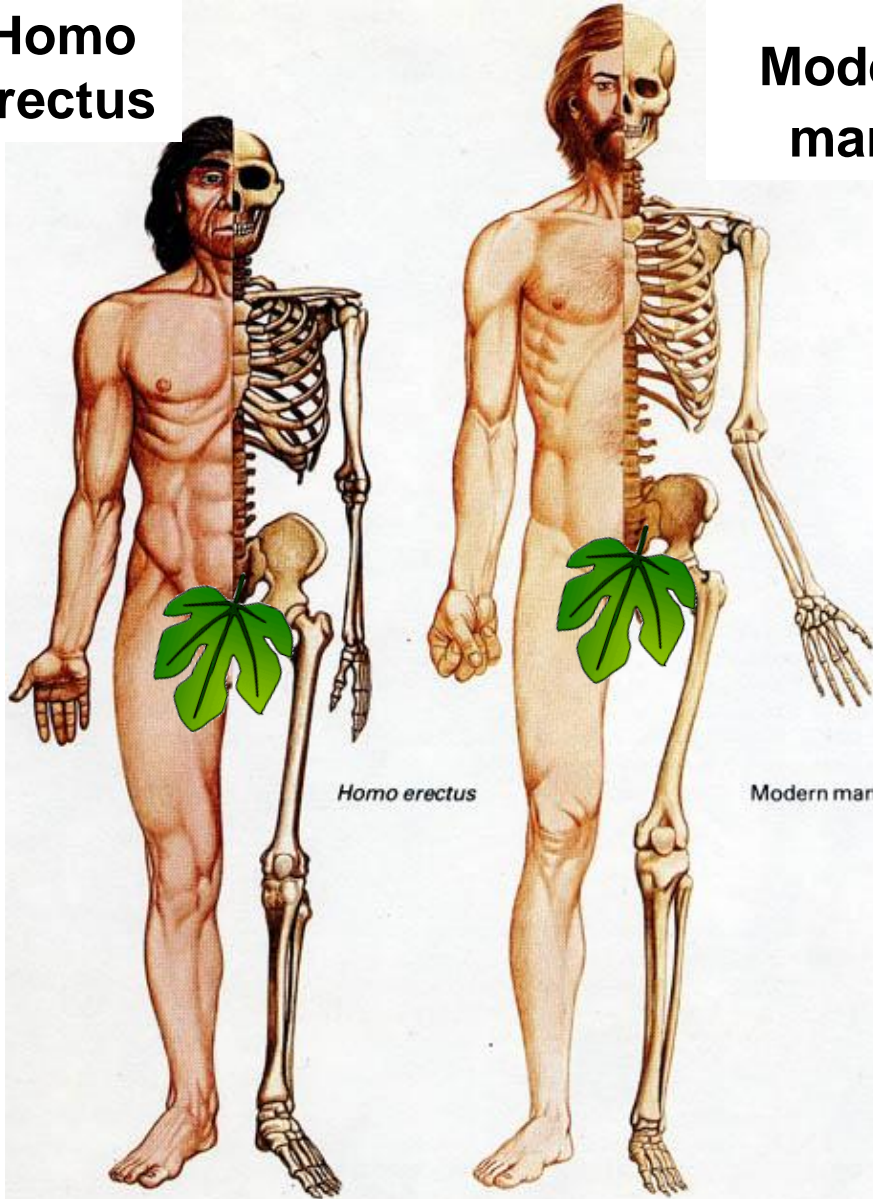
Homo erectus

280 individual fossils



- **morphologically similar to humans**
- **40 out 83 sites have stone tools, 8 controlled fire**
- **1 burial, 1 cremation, human carving, shelters, etc.**

Homo erectus



Modern man

Similar to modern humans below the neck



Homo erectus - Java man

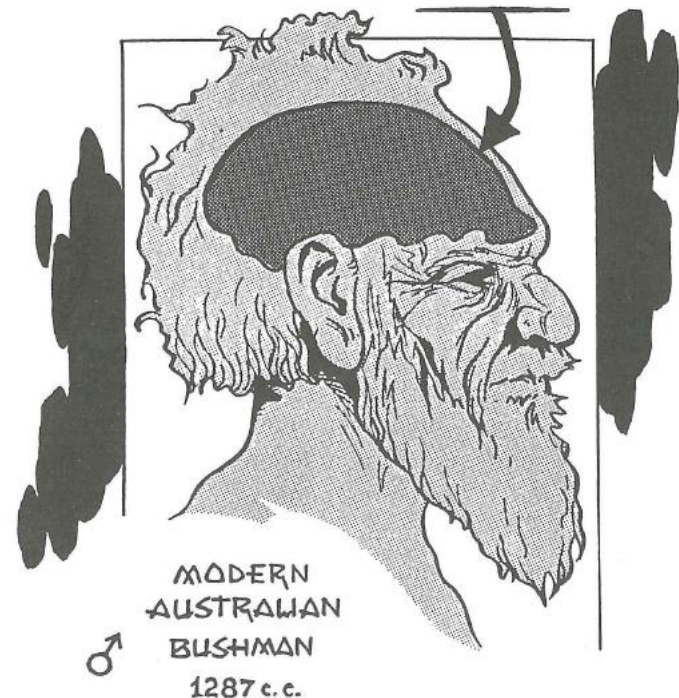
(Pithecanthropus erectus)

Found by laborers for Eugene Dubois in 1891 near Trinil, Java. Based on a skull cap and femur found 50 ft. away. At the time of the discovery, he also found two human skulls nearby that he did not reveal.



Replica of Java Man skull and leg bone made for the documentary "From Ape to Man"

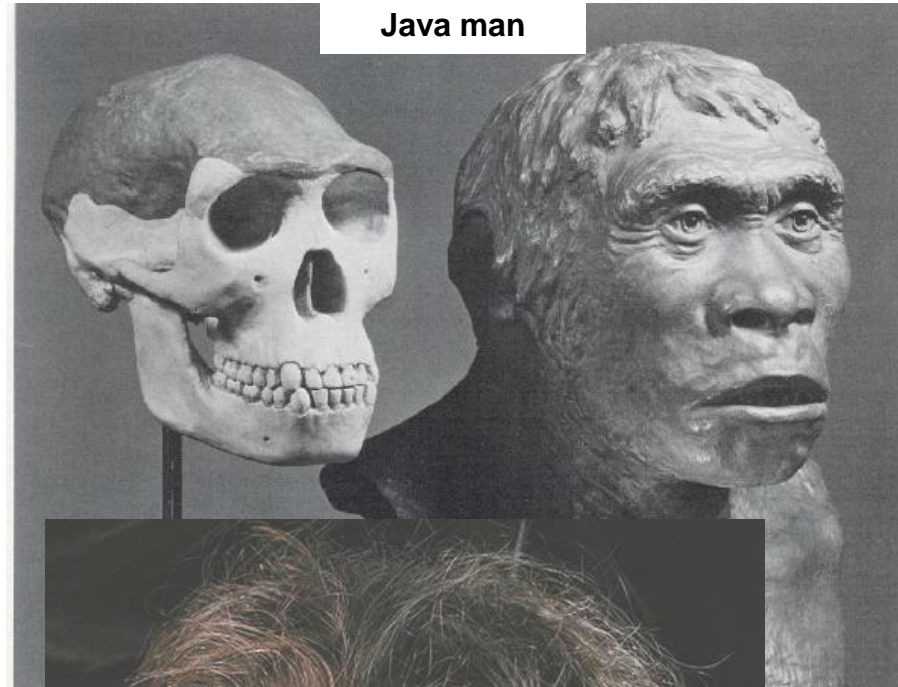
JAVA SKULL SUPERIMPOSED





**Homo erectus
Skull Sangiran
17 BH-018**

© Bone Clones® 2006



Java man

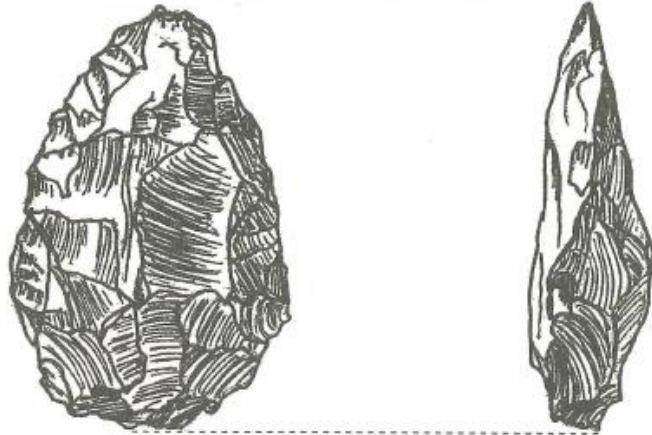


**Homo erectus
Skull - Tattersall
/ Sawyer
Recreation**

© Bone Clones® 2010

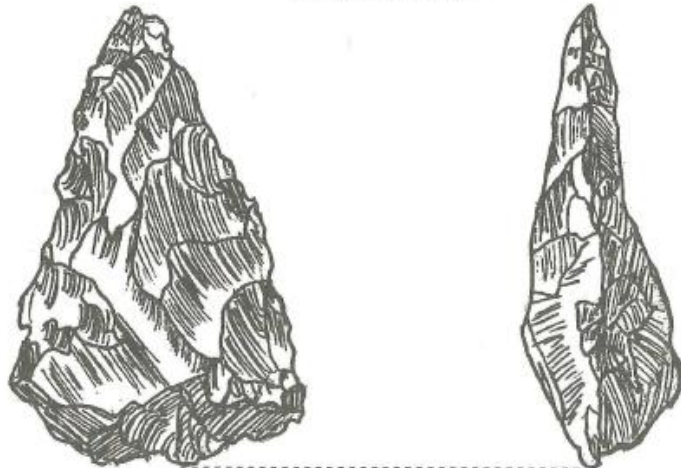


Acheulean Hand Axes



0 .5 1 in.
St. Acheul, France

after Oakley



0 .5 1 in.
Swanscombe, UK

after Oakley

Liz Larabee

**When “Hand
Axe” is thrown
like a discuss it
lands knife edge
side 93% of the
time**

Homo erectus and Neanderthals may be the same

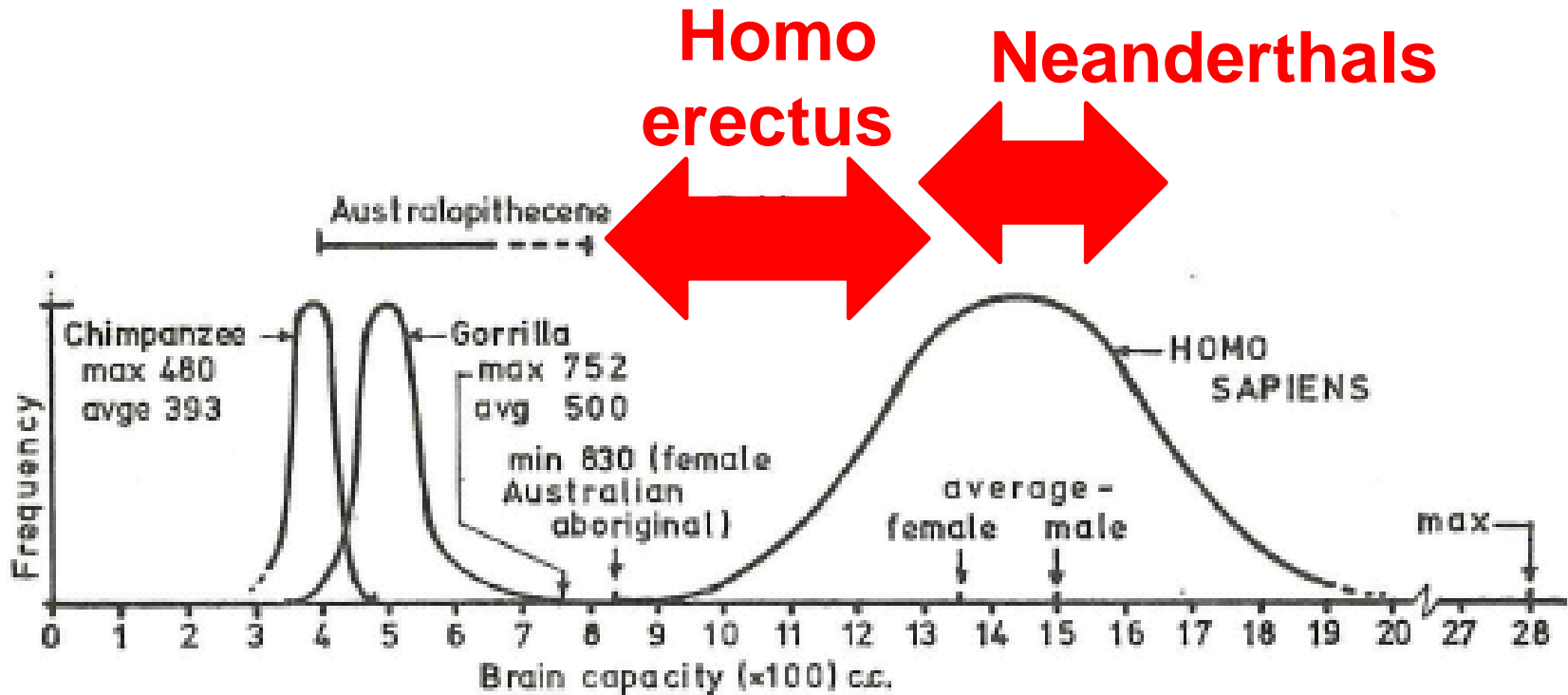


Fig.11. Diagram of ranges of brain capacities

Putting It All Together

The question is why is there not more work done in pre-men Systematics ? The last catalog of fossil was made in 1976. At that time the following fossilized individuals were found – roughly 4000;

Africa	1,390	(1976)
Europe and USSR	1,516	(1969,1970)
Americas, Asia, Australia	1,092	(1974)

Marvin Lubenow estimates the current total to be 7000 in (2004);

Can the lineage of man be found in the scientific literature?

Each of the 30 college students were given 5 “pre-men” fossils

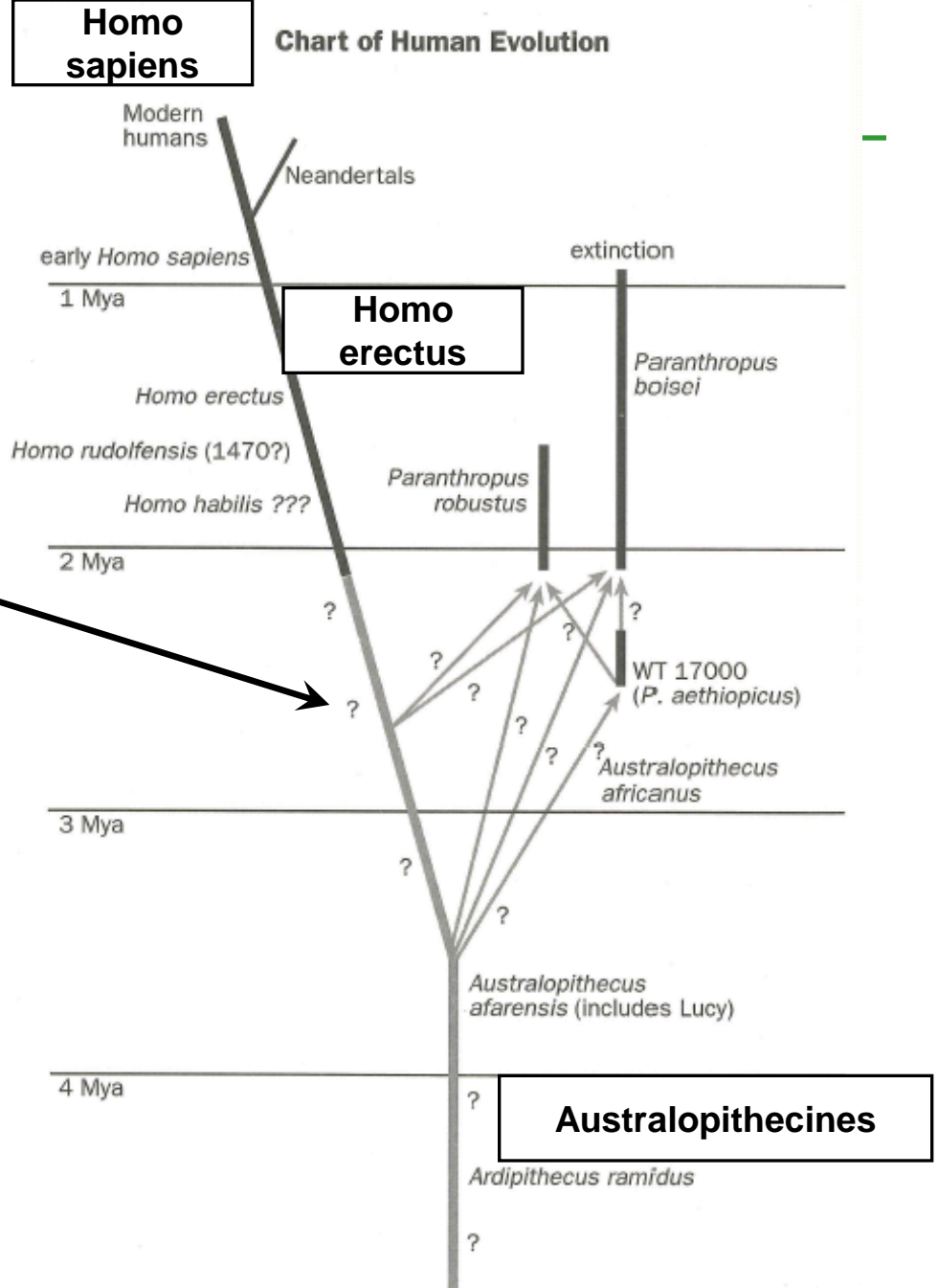
Rules:

- 1) Minimum 8 hours of research
- 2) At 5 evolutionist sources / no creationist material
- 3) Find the **date**
- 4) Find the **category** (Homo sapiens, Homo erectus, Homo habilis, Neanderthal, australopithecine)

When the students put the evolutionists' results together the theory of evolution was falsified !

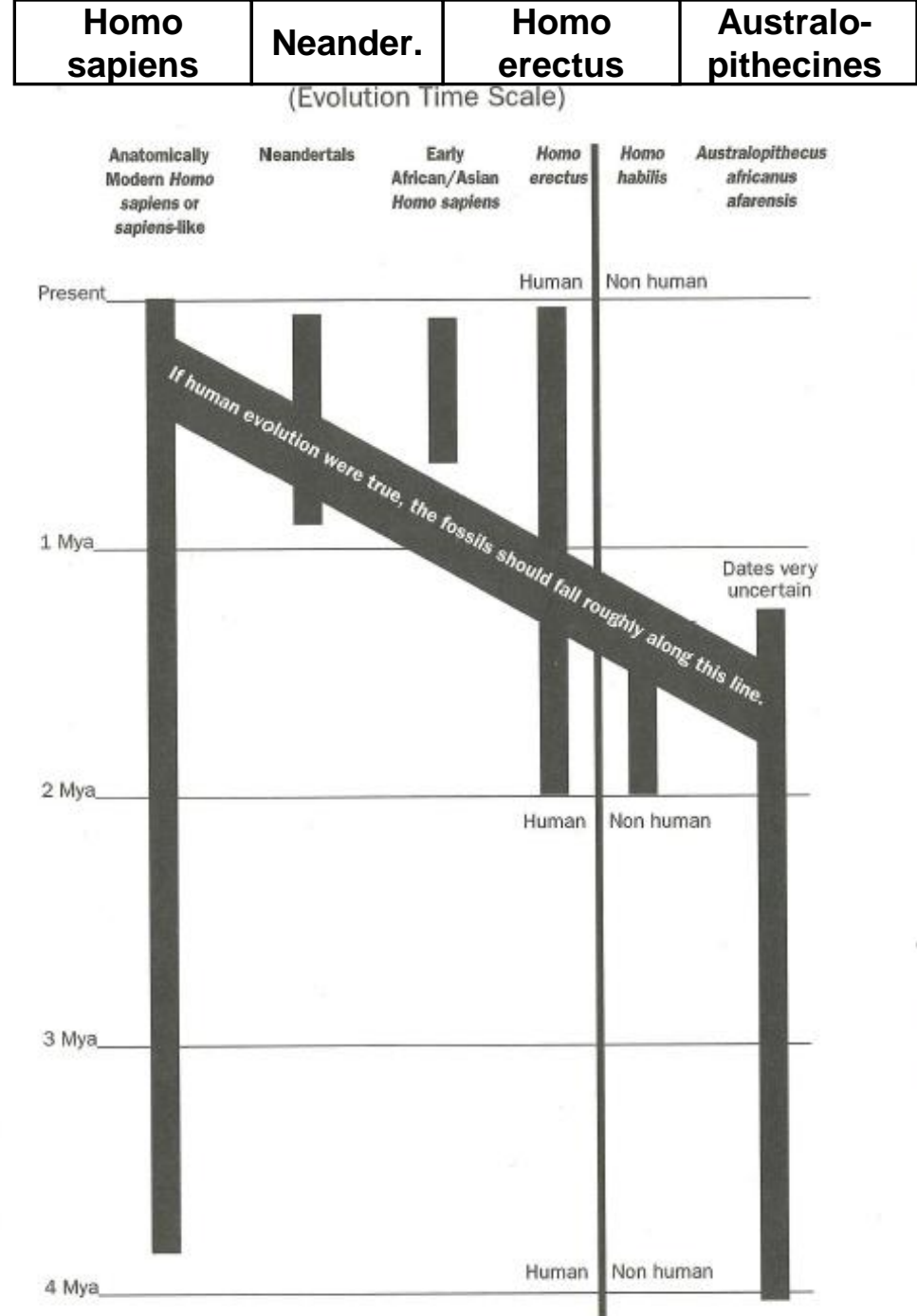
Human Family Tree ?

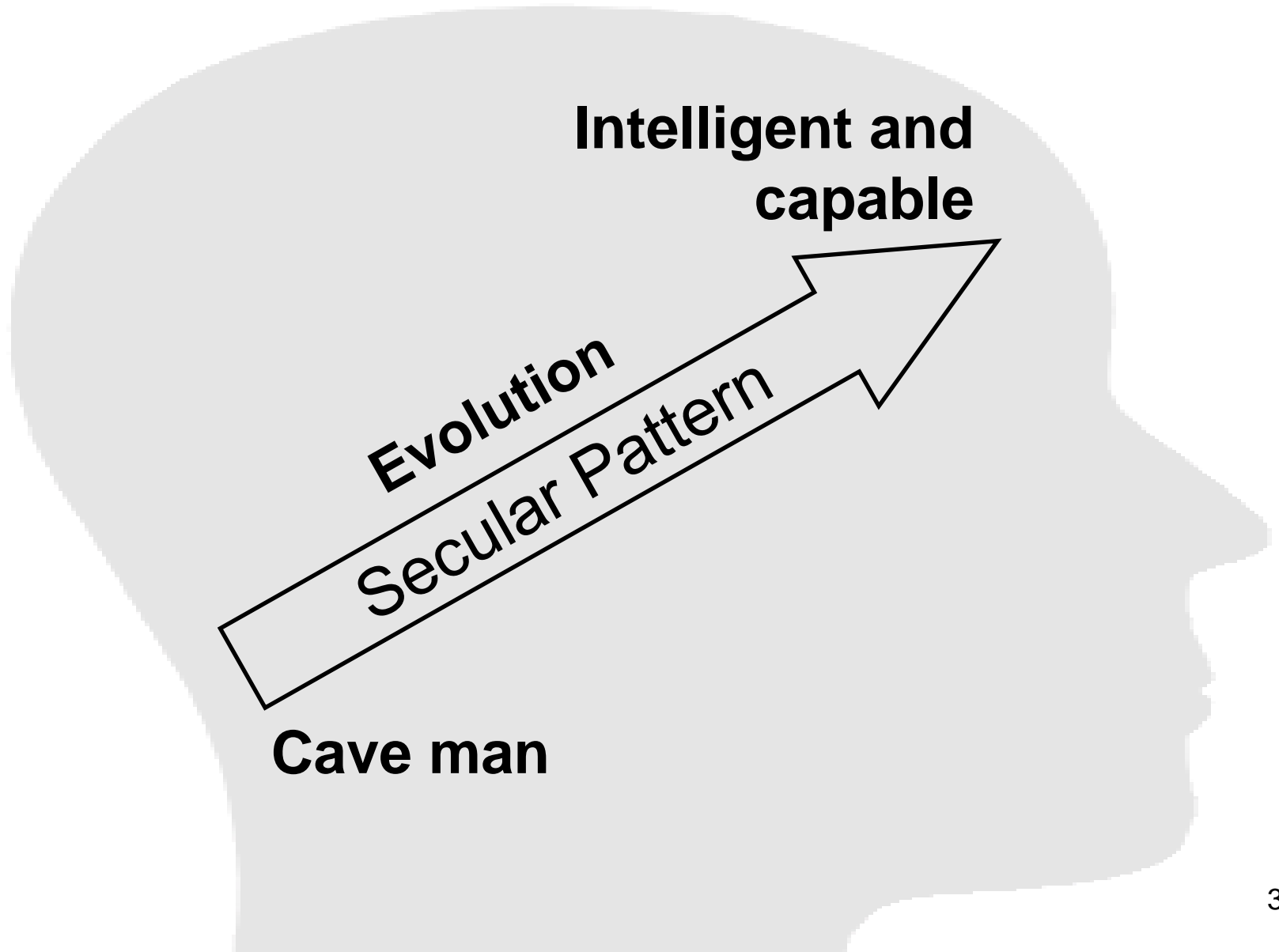
No clear ancestor path



Evolutionary Show-Stopper (Simplified)

**Humans,
Neanderthals,
Homo erectus,
Homo Habilis, and
Australopithecines
lived at the same
time !**





**Intelligent
and
capable
creation**

Gen 4:17 Cain builds city named after son Enoch

Gen 4:19 Jabel invents harp & flute

Gen 4:22 Tubal-cain foundry with bronze and iron

**Turn away from God
Biblical Pattern**

Turn “stupid”

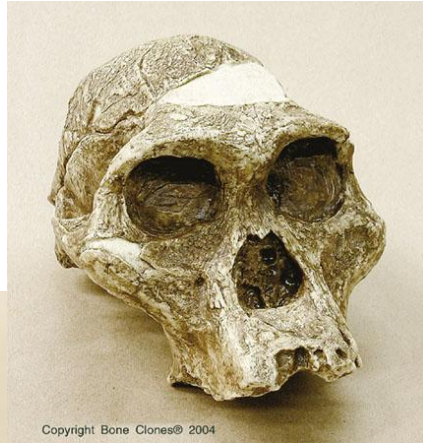
Summary

APES

Australopithecus africanus Skull Sts 5 "Mrs. Ples"



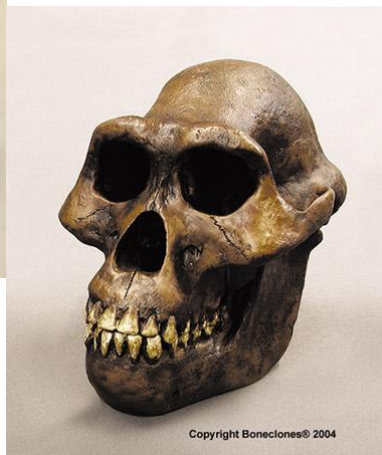
Australopithecus robustus Skull SK-48



Copyright Bone Clones® 2004



Australopithecus boisei Skull KNM-ER 406



Australopithecus afarensis

Models from Bone Clones Inc., Canoga park, CA

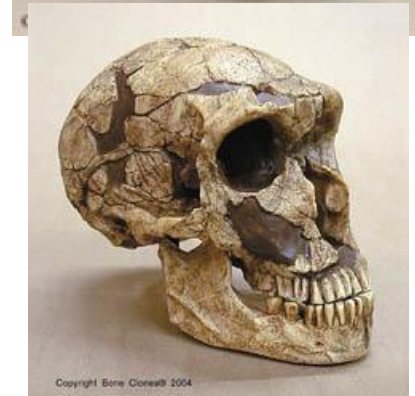
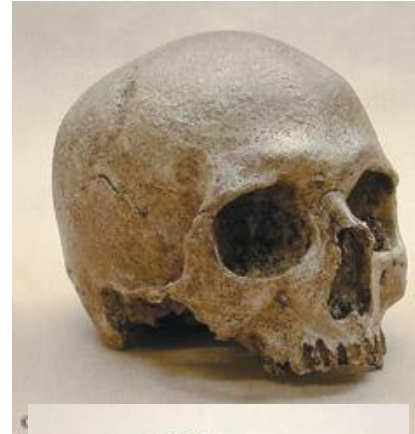
HUMANS

Homo habilis Skull KNM-ER 1813



© 2009 Bone Clones®

Cro-Magnon Skull



Homo neanderthalensis Skull La Ferrassie 1



Homo neanderthalensis Skull La Chapelle -aux-Saints